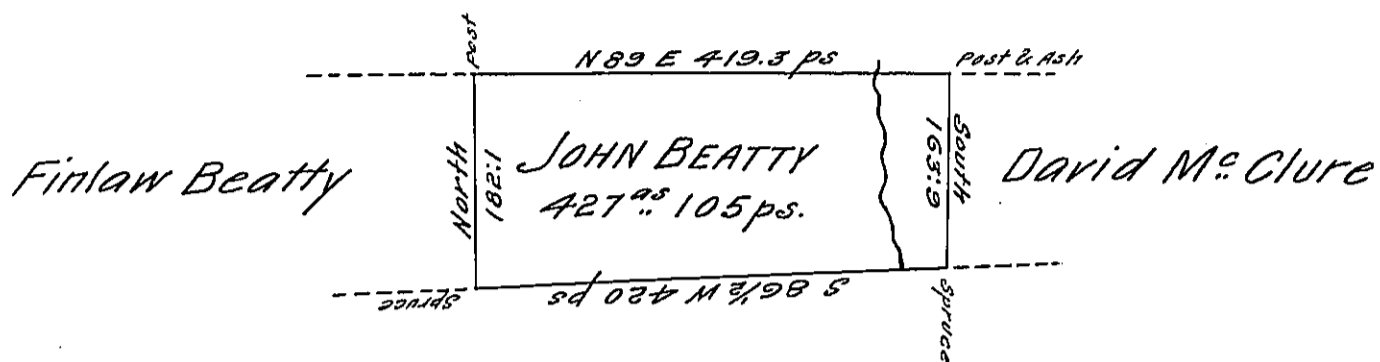


*Donation Lands*



*Donation surveys*

*Situate on the East Side of French Creek in Allegheny County containing 427 Acres 105 perches and allowance of Six pr Cent for Roads &c. Surveyed the 21<sup>st</sup> day of August 1799 for John Beatty on his actual Settlement and Improvement dated the 26<sup>th</sup> day of May 1799*

*John Power D<sup>r</sup>. Sr.*

*To Daniel Brodhead Esquire  
Surveyor General*

*IN TESTIMONY that the above is a copy of the original remaining on file in the Department of Internal Affairs of Pennsylvania, made conformably to an Act of Assembly approved the 16th day of February, 1833, I have hereunto set my Hand and caused the Seal of said Department to be affixed at Harrisburg, this seventeenth day of April 1906*

*James W. [Signature]*  
Secretary of Internal Affairs.